

double spigot pipe

Product Code	Dia	A Max (O/dia)	B Min (I/dia)	Length C (mm)	Nom (Wt kg)
HS2001	50	60	47.5	3000	15.7
HS3001	70	80	68.25	3000	19.4
HS4001	100	112	97.5	3000	29.7
HS6001	150	162	146.25	3000	45.2
HS8001	200	212.5	195	3000	71.2
HS10001	250	276.5	243.75	3000	99.8
HS12001	300	328.5	292.5	3000	129.7

stabilised chrome steel coupling

Product Code	Dia	D	B	Maximum Torque (Nm)
HS2002	50	63	48	20
HS3002	70	84	48	20
HS4002	100	114	48	20
HS6002	150	164	55	20
HS8002	200	214	68	30
HS10002	250	278	75	30
HS12002	300	330	75	30

ductile iron coupling

Product Code	Dia	A	B	C	Nominal (Wt/kg)
HS2012	50	117	79	69	0.7
HS3012	70	137	100	73	0.8
HS4012	100	172	132	73	1.1
HS6012	150	223	180	95	2.0
HS8012	200	283	240	95	3.3

88 deg short radius bend

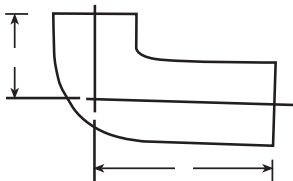
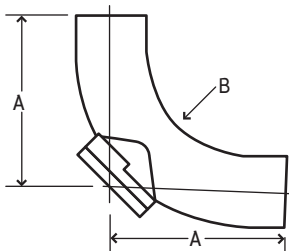
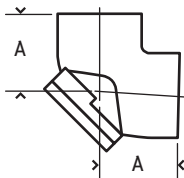
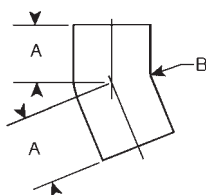
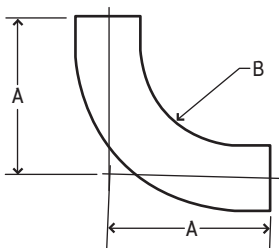
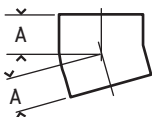
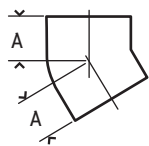
Product Code	Dia	A	Nominal (Wt/kg)
HS2003	50	75	0.8
HS3003	70	90	1.3
HS4003	100	110	2.5
HS6003	150	145	5.1
HS8003	200	180	9.0
HS10003	250	220	17.3
HS12003	300	260	27.3

69 deg short radius bend

Product Code	Dia	A	Nominal (Wt/kg)
HS2004	50	65	0.8
HS3004	70	75	1.1
HS4004	100	90	2.0
HS6004	150	120	4.6

45 deg short radius bend

Product Code	Dia	A	Nominal (Wt/kg)
HS2005	50	50	0.6
HS3005	70	60	0.9
HS4005	100	70	1.6
HS6005	150	90	3.6
HS8005	200	110	6.4
HS10005	250	130	11.0
HS12005	300	150	18.5



30 deg short radius bend

Product Code	Dia	A	Nominal (Wt/kg)
HS2006	50	45	0.5
HS3006	70	50	0.8
HS4006	100	60	1.4
HS6006	150	80	3.2

15 deg short radius bend

Product Code	Dia	A	Nominal (Wt/kg)
HS2007	50	40	0.4
HS3007	70	45	0.6
HS4007	100	50	1.2
HS6007	150	65	2.5

88 deg long radius bend

Product Code	Dia	A	B	Nominal (Wt/kg)
HS4008	100	269	180	5.3
HS6008	150	274	150	10.7

22 deg long radius bend

Product Code	Dia	A	B	Nominal (Wt/kg)
HS4009	100	90	180	2.2

88 deg short radius bend - back door

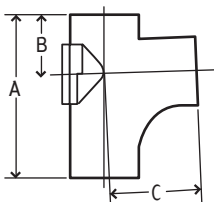
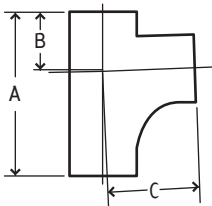
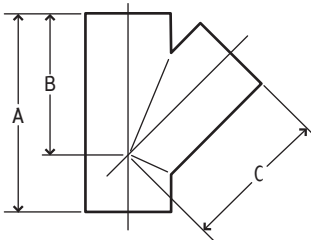
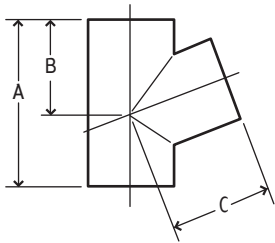
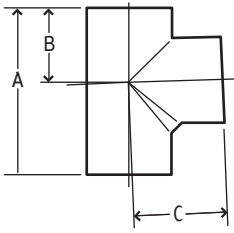
Product Code	Dia	A	Nominal (Wt/kg)
HS3010	70	90	2.5
HS4010	100	110	3.8

88 deg long radius bend - back door

Product Code	Dia	A	B	Nominal (Wt/kg)
HS4011	100	269	180	7.3
HS6011	150	274	150	12.7

88 deg bend - long tail

Product Code	Dia	A	B	Nominal (Wt/kg)
HS4013	100	110	250	4.0



88 deg single equal and unequal branch

Product Code	Dia	A	B	C	Nominal (Wt/kg)
HS2020	50x50	145	66	80	1.1
HS3020	70x50	155	72	90	1.5
HS3021	70x70	180	83	95	1.8
HS4020	100x50	170	76	105	2.2
HS4021	100x70	190	88	110	2.5
HS4022	100x100	220	105	115	3.4
HS6020	150x100	245	115	145	5.1
HS6021	150x150	300	142	155	7.4
HS8020	200x200	380	180	200	14.0
HS10020	250x250	468	228	243	23.5
HS12020	300x300	530	265	265	35.0

69 deg single equal and unequal branch

Product Code	Dia	A	B	C	Nominal (Wt/kg)
HS2023	50x50	135	80	80	1.1
HS3023	70x50	145	90	90	1.4
HS3024	70x70	170	100	100	1.8
HS4023	100x50	155	100	110	2.1
HS4024	100x70	180	100	120	2.6
HS4025	100x100	215	130	130	3.4
HS6023	150x100	235	150	155	4.9

45 deg single equal and unequal branch

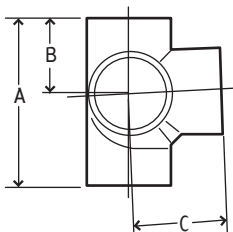
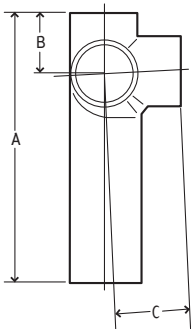
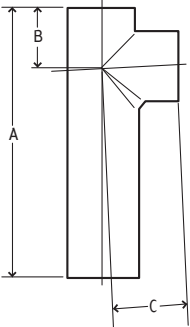
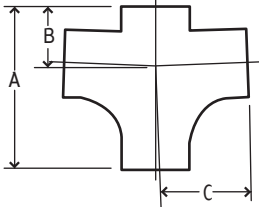
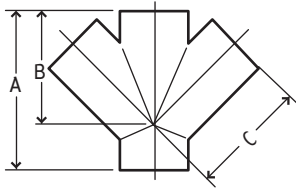
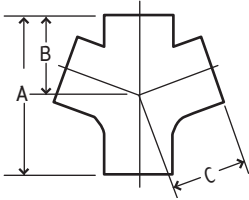
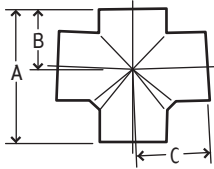
Product Code	Dia	A	B	C	Nominal (Wt/kg)
HS2026	50x50	160	115	120	1.3
HS3026	70x50	170	130	130	1.8
HS3027	70x70	200	145	150	2.2
HS4026	100x50	180	150	150	2.4
HS4027	100x70	215	170	170	3.1
HS4028	100x100	260	190	190	4.3
HS6026	150x100	280	225	225	5.8
HS6027	150x150	355	265	265	10.2
HS6028	150x70	235	205	205	4.9
HS8026	200x100	300	260	260	9.1
HS8027	200x150	375	300	300	13.2
HS8028	200x200	455	340	340	16.8
HS10028	250x250	560	430	430	32.0
HS12028	300x300	665	520	520	54.0

88 deg single branch - radius curve

Product Code	Dia	A	B	C	Nominal (Wt/kg)
HS4030	100x100	260	102	150	4.1
HS6030	150x100	305	115	202	6.5
HS6031	150x150	400	135	260	11.7

88 deg single branch - radius curve with access

Product Code	Dia	A	B	C	Nominal (Wt/kg)
HS4032	100x100	270	102	150	5.4
HS6032	150x100	300	115	202	9.5
HS6033	150x150	400	140	260	14.2



88 deg double branch

Product Code	Dia	A	B	C	Nominal (WT/kg)
HS4034	100x100	220	105	115	3.8

69 deg double branch

Product Code	Dia	A	B	C	Nominal (WT/kg)
HS4035	100x100	215	130	130	4.1

45 deg double branch

Product Code	Dia	A	B	C	Nominal (WT/kg)
HS4036	100x100	260	190	190	5.7
HS6036	150x100	280	225	225	6.5
HS6037	150x150	355	265	265	11.7
HS8036	200x200	455	340	340	21.0

88 deg double branch - radius curve

Product Code	Dia	A	B	C	Nominal (WT/kg)
HS4038	100x100	270	102	150	5.3
HS6038	150x100	300	115	200	8.2

88 deg single branch - long tail

Product Code	Dia	A	B	C	Nominal (WT/kg)
HS4040	100x100	430	105	115	5.2

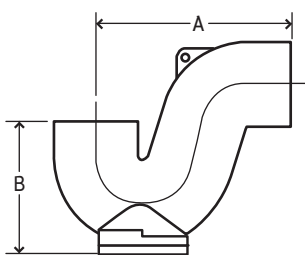
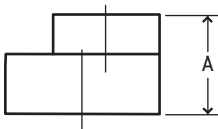
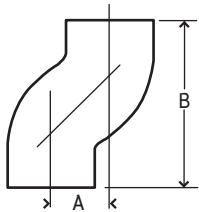
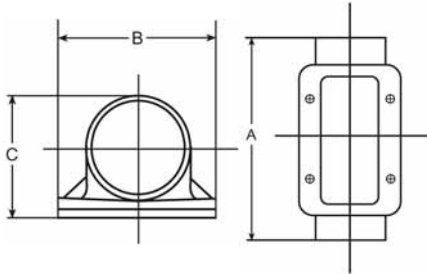
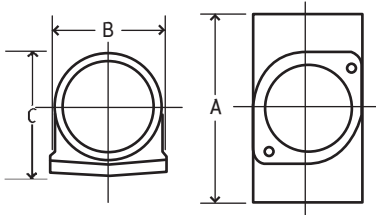
88 deg corner branch - long tail

Product Code	Dia	A	B	C	Nominal (WT/kg)
HS4041	100x100	430	105	115	7.0

88 deg corner branch - short tail

Product Code	Dia	A	B	C	Nominal (WT/kg)
HS4042	100x100	220	105	115	3.5

Halifax soil pipes & fittings



access pipe - round door

Product Code	Dia	A	B	C	Nominal (Wt/kg)
HS2043	50	170	80	76	1.7
HS3043	70	205	98	92	2.5
HS4043	100	250	118	130	4.3
HS6043	150	280	172	180	7.9

access pipe - rectangular door

Product Code	Dia	A	B	C	Nominal (Wt/kg)
HS4049	100	320	160	129	7.2
HS6049	150	395	215	184	13.5
HS8049	200	465	260	232	22.0
HS10049	250	535	335	300	37.5
HS12049	300	605	385	350	50.0

offset

Product Code	Dia	A	B	Nominal (Wt/kg)
HS4044	100	75	215	2.6
HS2045	50	130	230	1.4
HS3045	70	130	250	2.3
HS4045	100	130	270	3.8

pipe taper

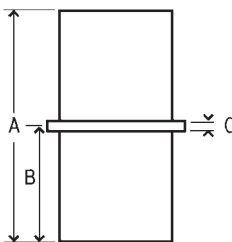
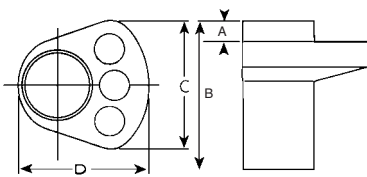
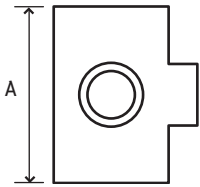
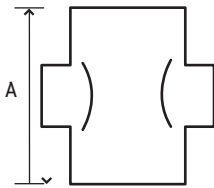
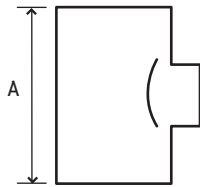
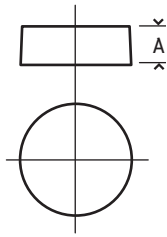
Product Code	Dia	A	Nominal (Wt/kg)
HS3046	70x50	78	0.6
HS4046	100x50	80	0.9
HS4047	100x70	88	1.1
HS6046	150x50	102	2.5
HS6047	150x70	100	2.7
HS6048	150x100	102	2.4
HS8046	200x100	115	4.0
HS8047	200x150	125	4.0
HS10046	250x100	125	5.5
HS10047	250x150	130	6.3
HS10048	250x200	140	6.5
HS12046	300x150	146	9.9
HS12047	300x200	160	10.1
HS12048	300x250	172	12.2

trap - with bottom access

Product Code	Dia	A	B	Nominal (Wt/kg)
HS2050	50	160	115	2.3
HS3050	70	200	140	3.6
HS4050	100	255	175	6.8
HS6050	150	350	245	15.8

Telephone: 01422 330607 Fax: 01422 320349

Email: info@hargreavesfoundry.co.uk www.hargreavesfoundry.co.uk



blank end

Product Code	Dia	A	Nominal (Wt/kg)
HS2051	50	30	0.2
HS3051	70	35	0.4
HS4051	100	40	0.8
HS6051	150	50	1.6
HS8051	200	60	2.9
HS10051	250	70	5.7
HS12051	300	80	10.1

blank end - drilled and tapped

Product Code	Dia	A	Nominal (Wt/kg)
HS4052	100	40	0.7
HS6052	150	50	1.5

88 deg boss pipe (single boss)

Product Code	Dia	A	Nominal (Wt/kg)
HS3053	70	148	1.6
HS4053	100	155	2.1
HS6053	150	175	3.6

88 deg boss pipe (double boss opposed)

Product Code	Dia	A	Nominal (Wt/kg)
HS4054	100	155	2.2

88 deg boss pipe (double boss @ 90 deg)

Product Code	Dia	A	Nominal (Wt/kg)
HS4055	100	155	2.2

Note: all bosses drilled & tapped 2" BSPT

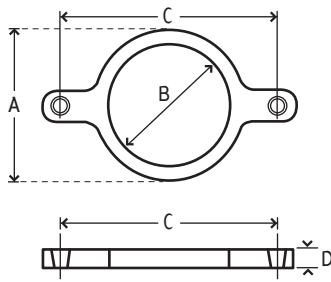
manifold connector

Product Code	Dia	A	B	C	D	Nominal (Wt/kg)
HS4058	100	42	396	218	190	6.2

Note: Fitted with 3 rubber plugs suitable for pushfit connection to 32mm/40mm dia plastic/copper waste.

stack support pipe

Product Code	Dia	A	B	C	Nominal (Wt/kg)
HS3056	70	210	105	8	1.8
HS4056	100	210	105	8	2.8
HS6056	150	210	105	8	4.3
HS8056	200	210	105	8	7.2
HS10056	250	280	140	8	12.5
HS12056	300	280	140	8	16.9



stack support pipe bracket

Product Code	Dia	A	B	C	D	Nominal (Wt./kg)
HS3057	70	106	85	170	20	1.0
HS4057	100	145	117	214	20	1.4
HS6057	150	195	167	255	20	1.8
HS8057	200	245	218	310	20	2.2
HS10057	250	311	283	394	40	6.0
HS12057	300	364	336	448	40	12.0

Note: Supplied with sound deadening rubber seal.

To order the Halifax cantilever bracket for wall mounting please contact the sales team.

Halifax Grip

Product Code	Dia (mm)	S (mm)	d (mm)	B1 (mm)	B2 (mm)
HS2060	50	M8 x 30	60	71	50
HS3060	70	M8 x 30	80	81	57
HS4060	100	M8 x 30	112	90	57
HS6060	150	M10 x 30	162	90	67
HS8060	200	M10 x 30	212	103	80

Halifax bismat bracket

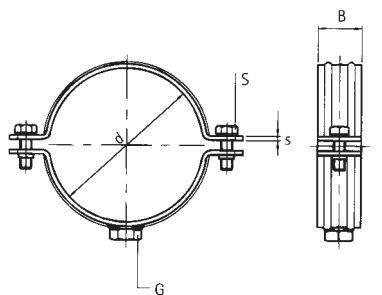
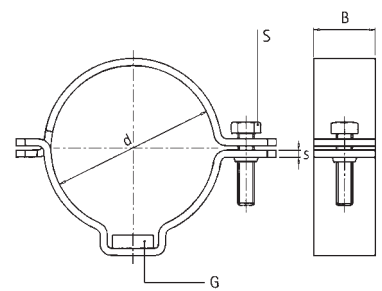
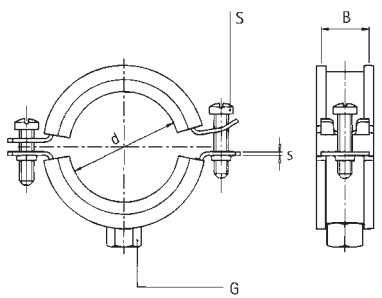
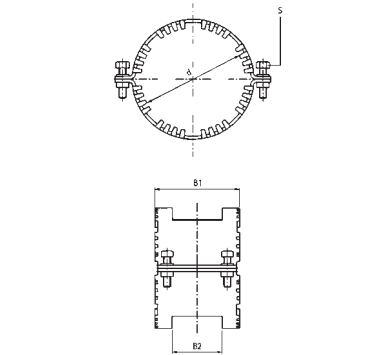
Product Code	Dia	d	G (dia)	S (Dia x L)	B x s (mm)	Safe Load (N)
HS2061	50	57-64	M8/M10	M6 x 25	23 x 2.0	1490
HS3061	70	75-80	M8/M10	M6 x 25	25 x 2.0	1490
HS4061	100	108-114	M8/M10	M6 x 25	25 x 2.5	2170
HS6061	150	159-168	M10	M8 x 35	25 x 3.0	2170
HS8061	200	210-219	M10	M8 x 35	25 x 3.0	2170

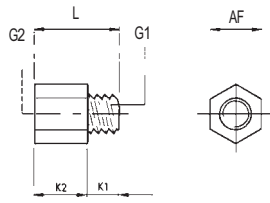
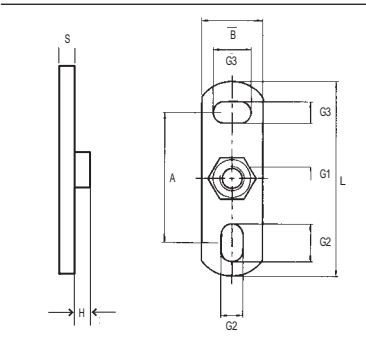
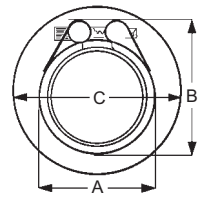
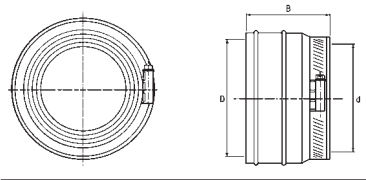
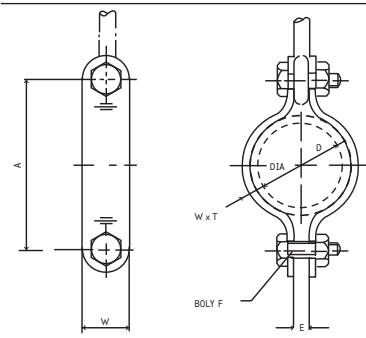
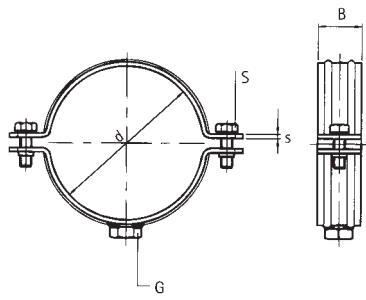
Halifax galvanised steel clamp

Product Code	Dia	d (mm)	G (dia)	S (Dia x L)	B x s (mm)	Safe Load(N)
HS2062	50	59-63	M10	M8 x 35	30 x 3.0	5700
HS3062	70	79-83	M10	M8 x 35	30 x 3.0	5700
HS4062	100	110-112	M10	M8 x 35	30 x 3.0	5700
HS6062	150	159-163	M10	M8 x 35	30 x 3.0	5700
HS8062	200	210-214	M10	M8 x 35	30 x 3.0	5700
HS10062	250	274	12.5mm	M8 x 35	30 x 6.0	5700
HS12062	300	326	12.5mm	M8 x 35	30 x 6.0	5700

Halifax heavy duty bossed bracket unlined

Product Code	Dia	G	d	S (Dia x L)	B x s (mm)	Safe (Load(N))
HS2063	50	M8/M10	59-65	M8 x 25	30 x 2.5	5590
HS3063	70	M10/M12	79-85	M8 x 25	30 x 3.0	5700
HS4063	100	M10/M12	108-116	M8 x 25	30 x 3.0	5700
HS6063	150	M10/M12	159-169	M10 x 35	38 x 4.0	5700
HS8063	200	M10/M12	208-218	M10 x 35	38 x 4.0	5700
HS10063	250	M16	267-279	M12 x 35	38 x 4.0	5700
HS10063	300	M16	315-325	M12 x 35	48 x 4.0	5700





Halifax heavy duty bossed bracket lined

Product Code	Dia	G	d	S (Dia x L)	B x s (mm)	Safe (Load(N))
HS2064	50	M8/M10	57-64	M8 x 25	30 x 2.5	5590
HS3064	70	M10/M12	79-85	M8 x 25	30 x 3.0	5700
HS4064	100	M10/M12	108-114	M8 x 25	30 x 3.0	5700
HS6064	150	M10/M12	159-168	M10 x 35	38 x 4.0	5700
HS8064	200	M10/M12	210-219	M10 x 35	38 x 4.0	5700
HS10064	250	M16	265-275	M12 x 35	38 x 4.0	5700
HS12064	300	M16	315-325	M12 x 35	48 x 4.0	5700

Halifax split band clip

Product Code	NB	A	WxT	D (mm)	E	Bolt F
HS2065	50	114	30 x 3mm	55-63	10	M10 x 30
HS3065	70	116	30 x 3mm	78-83	10	M10 x 30
HS4065	100	176	40 x 3mm	110-112	12	M10 x 30
HS6065	150	226	40 x 3mm	160-163	12	M12 x 40
HS8065	200	297	50 x 3mm	210-214	16	M16 x 50
HS10065	250	371	50 x 6mm	273	16	M16 x 50
HS12065	300	420	50 x 10mm	324	20	M20 x 80

Halifax fix connector

Product Code	Dia	D (mm)	d (mm)	B (mm)
HS2068	50	40-56	58	63
HS3068	70	56-75	78	77
HS4068	100	104-110	110	95

Halifax High Performance Coupling

Product Code	Dia (mm)	Bolt Size	A (mm)	B (mm)	C (mm)	Width (mm)	Nominal Wt/Kg
HS2069	50	M8	82	95	136	85	0.87
HS3069	70	M10	105	122	149	85	1.00
HS4069	100	M10	132	149	180	85	1.5
HS6069	150	M12	183	210	249	110	3.2
HS8069	200	M16	247	277	320	120	6.9
HS10069	250	M16	301	331	370	120	7.7
HS12069	300	M16	354	384	415	120	9.5

wall plate: type 670

Product Code	G1	H (mm)	A (mm)	B x s (mm)	L (mm)	G2 (mm)	G3 (mm)	Safe Load (N)
HSD6702	M10	10	50	25 x 3.0	80	15 x 8.5	15 x 8.5	2500

thread adaptor

Product Code	G1 (male)	G2 (female)	K1 (mm)	K2 (mm)	L (mm)	AF (mm)
HSD10/12	M10	M12	10	15	25	17